



ELECTRIC PUBLIC BIKE PUMP INSTALLATION GUIDE

DISCOVER MORE

For more Saris
Infrastructure products,
scan the QR code or visit
[sarisinfrastructure.com](https://www.sarisinfrastructure.com)



Tell Us What You Think!



Sarisinrastructure.com

Submit Your Installation Photos!

Nothing makes us happier than seeing our infrastructure products out in the wild!

Submit your photos at the link below.

www.sarisinfrastructure.com/contact/submit-photos



Thanks for buying our Electric Public Bike Pump!

Thank you for purchasing the Electric Public Bike Pump and congratulations on taking bicycle tire air inflation to the next level. The Saris Infrastructure Electric Public Bike Pump and Air Control Panel makes inflating bicycle tires while hitting your specific PSI level as simple as the touch of a button.

Please read and understand the following instructions before beginning your installation. In order to make this public-use bike pump as secure and trouble-free as possible, we designed the electric model to be hardwired to power. It is recommended to have a licensed electrician manage the installation.

Everyone here at Saris Infrastructure wants you to be happy with this product. Please contact us (sales@sarisinfrastructure.com, 800-783-7257) should you need anything.

Required Tools

Tape Measure
½" Masonry Drill Bit Drill (Hammer drill recommended)
Hammer
Anchor Set Tool (included)
Triple Slot Nut Driver (included)
3/8" Drive Ratchet
Marker or Pencil
SAE Hex Key Set
Level
Tape Measure
File or Sanding Tool
Torque Wrench

Parallel Wall or Object Setbacks:

Both sides of the Electric Public Bike Pump should be at least 12" from walls or other obstructions. If pedestal mounting, we suggest mounting it tight against a wall. See Figure 1.

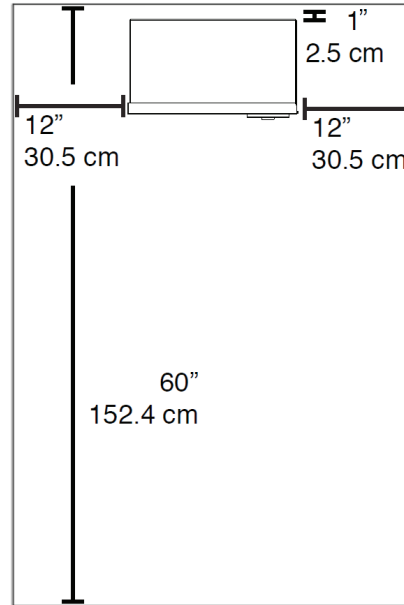


Figure 1: Setbacks

Wall Mounting or Vending Machine Mounting

1. Identify mounting location. Be sure to follow setbacks. The base of the electric pump should be mounted greater than 37" from the ground. If installing on a vending machine, mount in a position that does not inhibit the door opening (we recommend mounting on the left side of the machine).
2. Choose your mounting surface and fasteners. If mounting to sheet metal, we recommend using #14 sheet metal screws no longer than 3/4". If mounting into concrete, we recommend using a 1/4" masonry screw. If mounting into wood framing, we recommend using #14 wood screws.
3. Before installing the screws, install the rubber backed washers with the sheet metal screws to prevent water intrusion. Be careful not to over-tighten the screws during install.

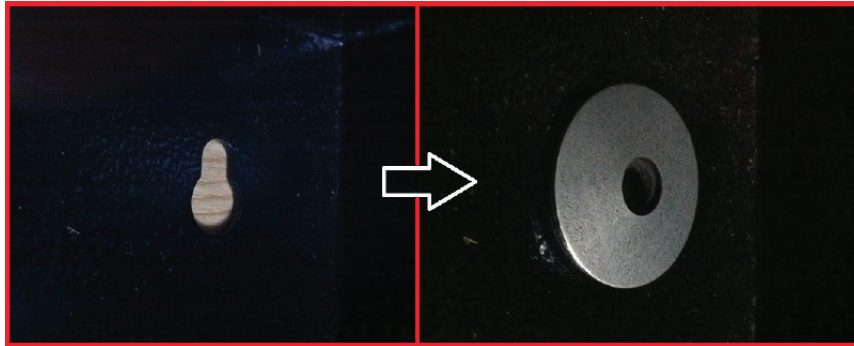


Figure 2

Electrical Hook Up

1. The Saris Infrastructure Electric Bike Pump is meant to be installed by a licensed electrician.
2. We suggest running rigid electrical conduit to hard-wire the pump. This will help avoid tampering.
3. The electric pump comes with a testing lead still attached to make it easy to identify the power connections. You will make new connections at the terminal strip.
4. It is important to use a strain relief on the incoming cable to avoid strain on the terminal strip connections.

Air Line Hook up

1. The Saris Infrastructure Electric Bike Pump comes without the airline connected. Ensure PTFE tape is installed on the pipe fitting and tighten the hose into the fitting at the base of the enclosure using two wrenches.
2. You can now fill up bicycle tires by holding down the pump button.

Required Maintenance

The only required maintenance for the Electric Public Bike Pump is to replace the air chuck every 6 months, or as needed.

The compressor does not need to be cleaned or drained. If any performance issues arise, please contact your local Approved Saris Infrastructure Distributor.

Pump Operation

Operation instructions for the pump are included on the faceplate of every pump via figure 3 diagram:

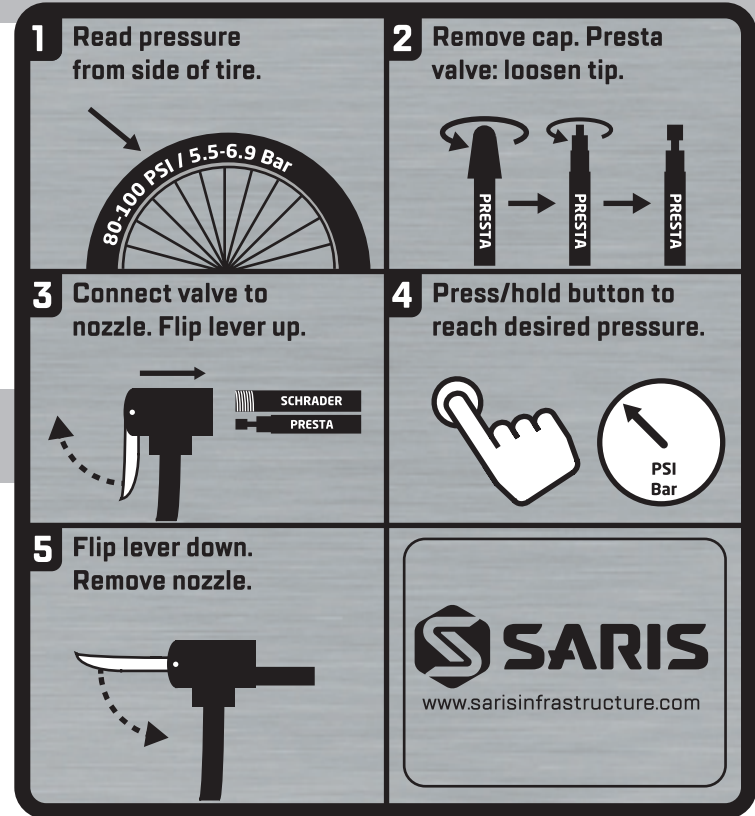
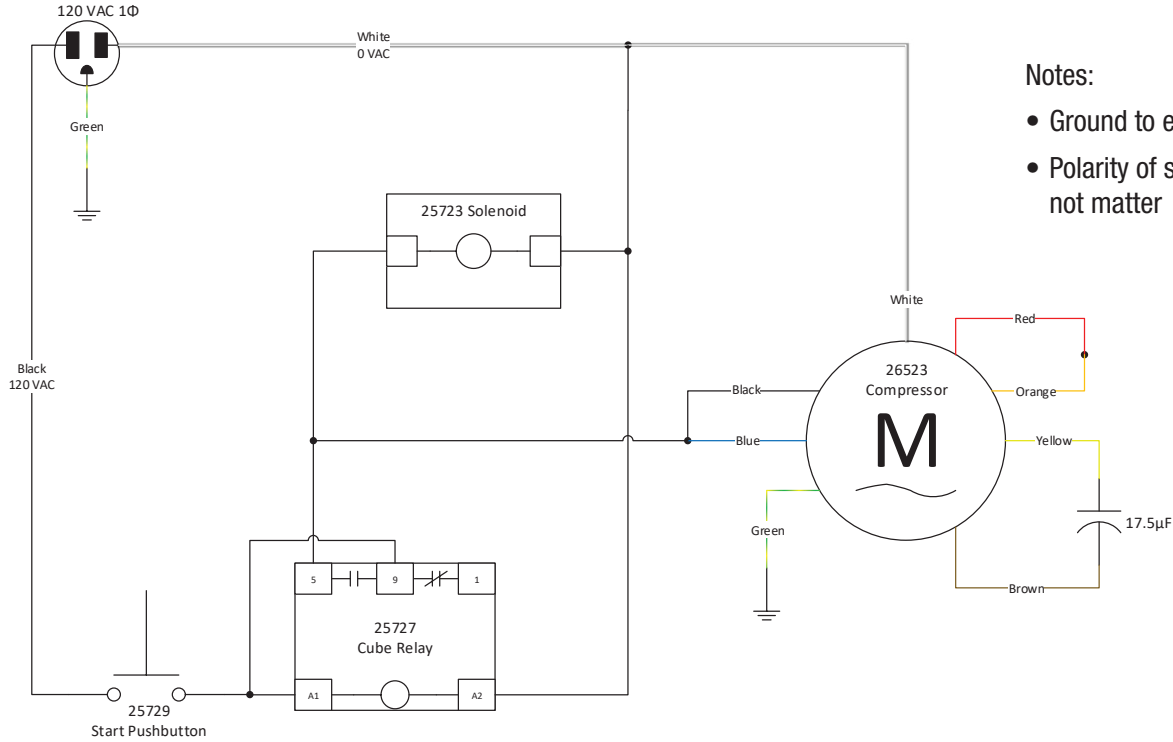


Figure 3

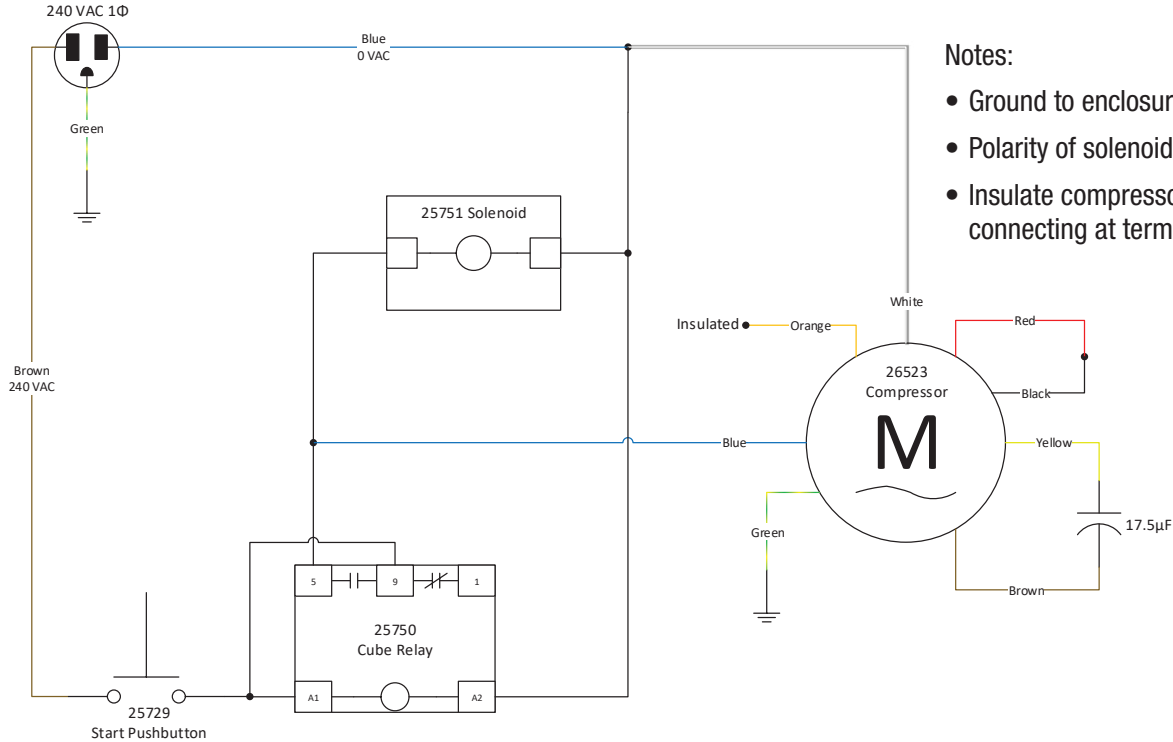
126263 - 120V 50/60 Hz Wiring Diagram



Notes:

- Ground to enclosure
- Polarity of solenoid valve does not matter

126264 - 240V 50/60 Hz Wiring Diagram



Notes:

- Ground to enclosure
- Polarity of solenoid valve does not matter
- Insulate compressor orangewire by connecting at terminalblock

WARRANTY

WARNING: Manufacturer and seller expressly disclaim any and all liability for personal injury, property damage or loss, whether direct, indirect, or incidental, resulting from the incorrect attachment or inappropriate placement, improper use, inadequate maintenance, or neglect of this product. Placement of this product is beyond control of the manufacturer. It is the end users reasonability to place this product so as to avoid potential pedestrian or playground accidents.

WARRANTY: We warrant this product to the first consumer to be free from defect in material and workmanship for a period of one year from date of purchase. Please retain your sales slip for your records. Any product or part thereof found to be defective within that period will be replaced without charge provided that: (1) the product was not misused; (2) no alterations or modifications were made; (3) its failure resulted from a defect in material or workmanship and not from normal wear expected in the use of the product; (4) the product or part is delivered, freight prepaid, to Saris Products. Manufacturer's only obligation shall be to replace such products or parts proved to be defective.

Saris Infrastructure 5253 Verona Road Madison, WI 53711 (800)783-7257 www.sarisinfrastructure.com