



SARIS
INFRASTRUCTURE



Wall Mounted Work Stand

INSTALLATION GUIDE

DISCOVER MORE

For more Saris
Infrastructure products,
scan the QR code or visit
[sarisinfrastructure.com](https://www.sarisinfrastructure.com)



Tell Us What You Think!



**Sarisinfrastructure.com/
product/wall-mount-work-stand**

Submit Your Installation Photos!

Nothing makes us happier than seeing our infrastructure products out in the wild!

Submit your photos at the link below.

www.sarisinfrastructure.com/contact/submit-photos



Thanks for purchasing the Wall Mounted Repair Stand!

You're now the proud owner of the Saris Infrastructure Wall Mount Work Stand!

Made in the USA, this space saving bike repair station combines form and function in a space saving design making it ideal for installations where room is limited.

Pair the Wall Mount Work Stand with any of our bike pumps to create a full service public use repair station that helps get cyclists back on the road with a dialed ride.

Please be sure to read and understand the following instructions before beginning your installation.

Everyone here at Saris Infrastructure wants you to be happy with this product.

Please contact us at sales@sarisinfrastructure.com or 608-729-6243 should you need anything.

Required Tools

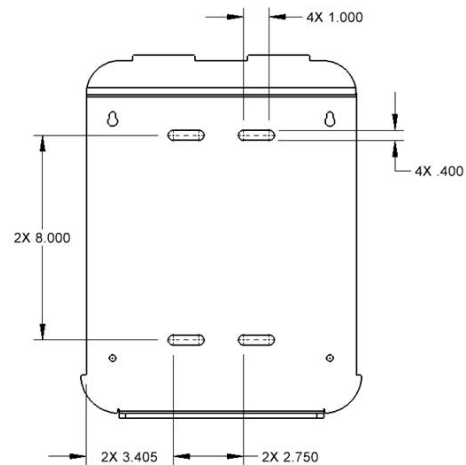
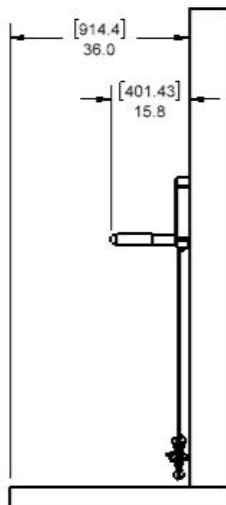
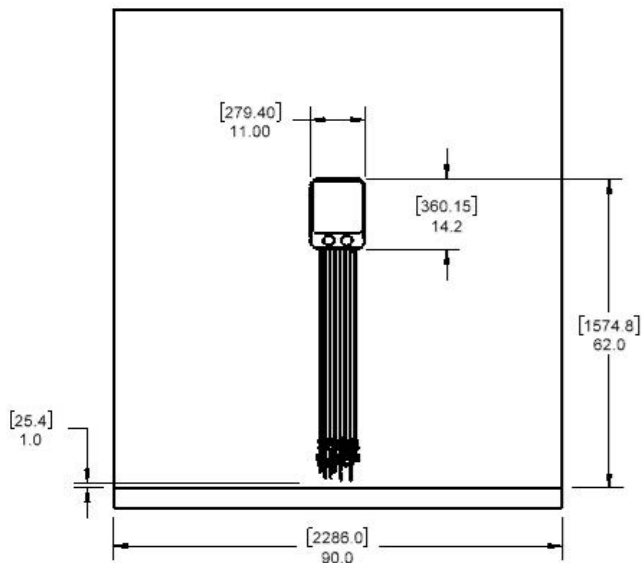
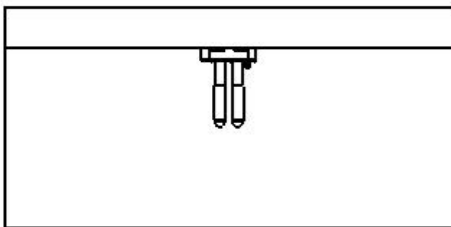
Tools Required:

- Drill and drill bits (mounting hardware dependent)
- Mounting hardware (location dependent)
- Compatible U-bolts (post mount only)
- Saris Security Socket (included)
- 3/8" Drive ratchet
- Tape measure
- Level
- Marker or pencil

Optional

Hardware – part # 29173 (sold separately.
For formed concrete walls only. For all other surfaces, consult installer)

Recommended Setbacks



Rear Mounting Plate dimensions and anchor points

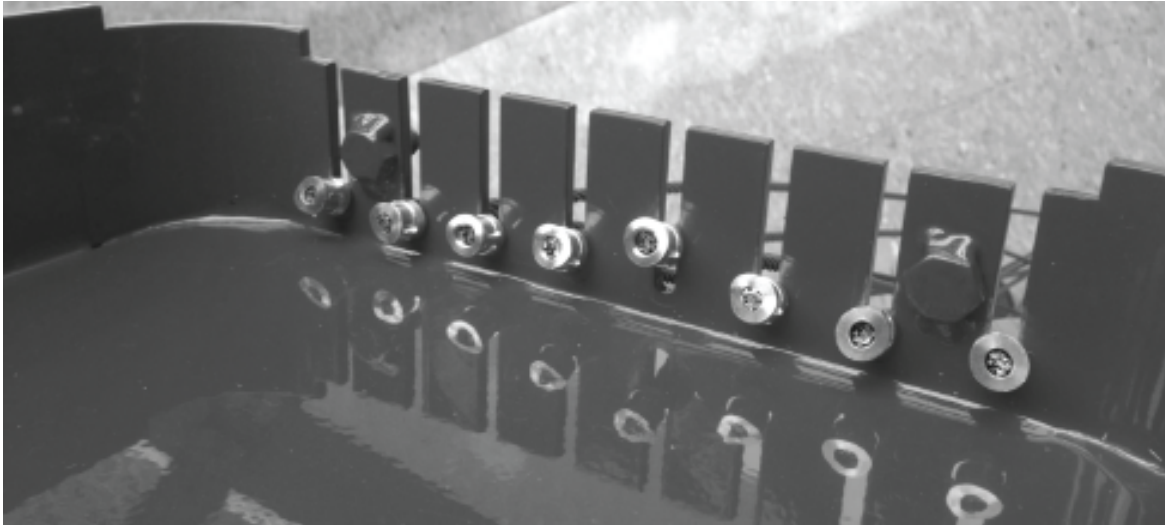
Wall Mounting Instructions

1. Identify mounting location and be sure to follow recommended setbacks. The top of the work stand should be mounted at 62" (157.5cm) from the ground. If installing on a vending machine, mount in a position that does not inhibit the door opening (we usually mount on the left side of the machine).
2. Choose appropriate fasteners for your mounting surface.
 - a. If mounting to sheet metal, we recommend using #14 sheet metal screws no longer than 3/4" (20mm). If mounting into concrete, we recommend using a 1/4" masonry screw.
 - b. If mounting into wood framing, we recommend using #14 wood screws.
 - c. If installing into drywall, we recommend drywall toggle anchor (typically rated to 100+ lbs. each) that uses at least a #12 screw size (and installing all 4).
 - d. If installing into a stud wall, it is possible to use a #14 wood into 1 stud and toggle anchors into the other 2 holes that do not line up with a stud.

Post Mounting Instructions

1. Identify mounting location and be sure to follow recommended setbacks. The top of the work stand should be mounted at 62" (157.5cm) from the ground.
2. Choose appropriate U-bolts for your mounting post:
3. Place U-bolts around post and through slots in the back mounting plate
4. Secure with nuts and tighten until unit is secure on post. Use bolt cutters to trim of excess threading if needed.

3. Once the back plate is secured, load the tools to the front cover as shown.



4. Lift the front cover onto the back plate so that the tabs fit into the slots.



5. Install and tighten penta nuts to approximately 5-6 Nm. Be careful not to over tighten.

WARRANTY

WARNINGS: Manufacturer and seller expressly disclaim any and all liability for personal injury, property damage or loss, whether direct, indirect, or incidental, resulting from the incorrect attachment or inappropriate placement, improper use, inadequate maintenance, or neglect of this product. Placement of this product is beyond control of the manufacturer. It is the end user's responsibility to place this product so as to avoid potential pedestrian or playground accidents.

WARRANTY: We warrant this product to the first consumer to be free from defect in material and workmanship for a period of two years from date of purchase (please retain your sales slip for your records). Any product or part thereof found to be defective within that period will be replaced without charge provided that: (1) the product was not misused; (2) no alterations or modifications were made; (3) its failure resulted from a defect in material or workmanship and not from normal wear expected in the use of the product; (4) the product or part is delivered, freight prepaid, to Saris Infrastructure. Manufacturer's only obligation shall be to replace such products or parts proven to be defective. Damage to mounting surface is not covered under warranty.

Saris Infrastructure 5253 Verona Road Madison, WI 53711 (800) 783-7257 www.sarisinfrastructure.com